

Welcome Create Monthly Art Task

Our theme for this month is 'connectedness'. At a time when we are distanced physically from those we love, if you were to create an ode to someone special, important or inspirational, how would it look, and what would it say?

Inspired by the architecture of Pitzhanger, the hand-painted Chinese wallpaper of the upper drawing room, and Faith Ringgold's work *Coming to Jones Road* Tanka quilts, we will use patterns within a 'window', framing the person to whom this piece will be dedicated.

Share your work on
social media
#WelcomeCreate
@Pitzhanger

Materials Needed

Used wrapping paper | Colourful or plain card
Scissors | Glue Pen | pencil | rubber | ruler
Water colours | paint brush

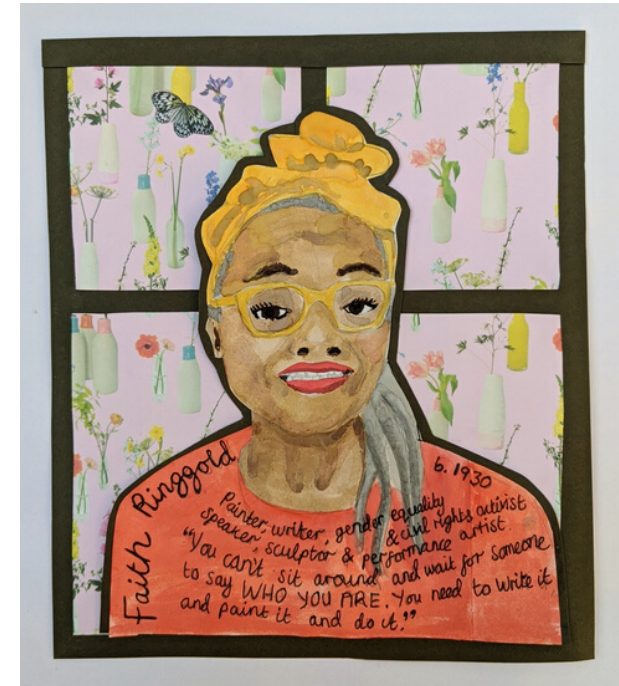
Optional:

Preferred paints | coloured pencils | felts | crayons |
Offcuts of wallpaper | printing out a pattern would
also work.

Top Tip
Increase
connectedness by
sharing an image of
the art with your
special person

PITZHANGER

MANOR & GALLERY



What to do

1. Using your own window as a basis, draw the shape of the frame on a sheet of card, then cut out what would be the glass panels. Leave roughly 80mm clear area at the bottom on which you will write your dedication. We used an A3 sheet of card, but you can scale down to your preferred size.
2. Trim the wrapping paper so it fits behind the outside window, then glue the frame onto it so that the pattern shows through the panes.
3. Hand-sketch the portrait of your chosen individual, paint it, then cut it out. Stick this on to the centre of the window frame.
4. Think about what you want to say to or about the person in the artwork, then hand write this text onto the clear space at the bottom of the frame.

