

# PITZHANGER

MANOR & GALLERY

Press Release



emmanuel boos, *Extet*, 2024  
Porcelain, iron-based glazes  
Photo: Sebastian Weindel



Joseph Harrington, *Pacific Mist*  
Cast Glass, Lost Ice Process, with salt erosion.  
Photo: Sylvain Deleu

## ***A Fine Line: Modern Makers at Pitzhanger***

8 May – 4 August 2024

**Ealing, London:** Pitzhanger Manor & Gallery is pleased to present *A Fine Line: Modern Makers at Pitzhanger*, an exhibition of modern ceramics and glass, curated by Joanna Bird. The exhibition, taking place between, 8 May and 4 August 2024, brings together works of eleven makers and sets their work against the historic interiors of the manor, designed by renowned architect Sir John Soane.

*A Fine Line: Modern Makers at Pitzhanger* forms part of Pitzhanger's ongoing programme drawing on the legacy of Soane, who sought to display contemporary art alongside his treasures from antiquity, and intended his home to be a school for learning design principles and as a tool to stimulate people's visual imagination.

Among the featured artists is Emmanuel Boos, known for his deep knowledge of ceramic glazes and has made innovative groups of brick formations, a nod to Soane's background—his father was a bricklayer. Having studied under the renowned potter Jean Girel in France, Boos was an artist in residence at Sèvres – Cité de la céramique from 2016–2019. This year, he is shortlisted as one of the 30 finalists for the LOEWE FOUNDATION Craft Prize 2024.

The exhibition also features Prue Cooper, known for her slip-decorated press-moulded earthenware incorporating moments of poetry in her illustration; and Steffen Dam, whose intricate glassworks recall botanical drawings of the Nineteenth Century. Joseph Harrington, also working with glass, creates large shard-like sculptures permeated with gradual tones of colour, as if hewn from a glacier.

Further contributions include Hanne Heuch's reflective porcelain pieces inspired by Norwegian landscapes; Tom Perkins' detailed stone carvings; William Plumptre's vases which incorporate traditional techniques with a modern twist; Nicholas Rena's innovative ceramic sculptures; Judith

**Pitzhanger Manor & Gallery Trust, Mattock Lane, Ealing Green, London W5 5EQ**

[pitzhanger.org.uk](http://pitzhanger.org.uk)

[pitzhanger@pitzhanger.org.uk](mailto:pitzhanger@pitzhanger.org.uk)

020 3985 8888

Charity Registration: 1152434

Company Registration: 08278049



# PITZHANGER

## MANOR & GALLERY

Rowe's decorative slipware; Matthew Warner's historically inspired pottery; and Gregory Warren Wilson's multilayered glass works that explore optical effects and light.

Clare Gough, Director of Pitzhanger Manor & Gallery, said, "We are delighted to host 'A Fine Line' at Pitzhanger Manor & Gallery, an exhibition that resonates with Sir John Soane's original vision for this magnificent house. Soane conceived Pitzhanger as a stage to present his collections and showcase his architectural genius. We are proud to present a platform for Soane's creativity which continues to meet contemporary artistic excellence, echoing the interplay of history and modernity that Soane himself championed."

Curator Joanna Bird said "This is a microscopic moment in time to reflect on Sir John Soane's interests, his vision and his innovative ideas. I have chosen work that I think would amuse him, were he alive today. One of his gifts was the element of surprise: this will be the theme running through 'A Fine Line'."

This exhibition will form part of London Craft Week 2024 and during the festival is accompanied by two events: an Artist Talk with Joseph Harrington, Gregory Warren Wilson, and Curator Joanna Bird on 16 May, from 6.45 to 7.45 pm, and a drop-in tour with Joanna Bird on 18 May, from noon to 2 pm. For more information and to reserve tickets for the exhibition and events, please visit [www.pitzhanger.org.uk/a-fine-line](http://www.pitzhanger.org.uk/a-fine-line).

*A Fine Line* runs concurrently alongside Pitzhanger's other exhibitions: Sinta Tantra's *The Lightclub of Batavia* and Alice Irwin: *Chinwag*.

**\*\*END\*\***

For all media enquiries, please contact [aston.law@pitzhanger.org.uk](mailto:aston.law@pitzhanger.org.uk)  
[lily.mountford@pitzhanger.org.uk](mailto:lily.mountford@pitzhanger.org.uk) and [press@pitzhanger.org.uk](mailto:press@pitzhanger.org.uk)

To be kept up to date with the latest news, sign-up to the Pitzhanger newsletter at [www.pitzhanger.org.uk/newsletter](http://www.pitzhanger.org.uk/newsletter)

[Instagram](#) | [Facebook](#) | [X](#): @pitzhanger

## Listing Information

### ***A Fine Line: Modern Makers at Pitzhanger***

Date: 8 May – 4 August 2024

### **Artists**

emmanuel boos

Prue Cooper

Steffen Dam

Joseph Harrington

Hanne Heuch

**Pitzhanger Manor & Gallery Trust, Mattock Lane, Ealing Green, London W5 5EQ**

[pitzhanger.org.uk](http://pitzhanger.org.uk)

[pitzhanger@pitzhanger.org.uk](mailto:pitzhanger@pitzhanger.org.uk)

020 3985 8888

Charity Registration: 1152434

Company Registration: 08278049



# PITZHANGER

MANOR & GALLERY

Tom Perkins  
William Plumptre  
Nicholas Rena  
Judith Rowe  
Matthew Warner  
Gregory Warren Wilson

Artist Talk with Joseph Harrington, Gregory Warren Wilson, and Curator Joanna Bird on 16 May 2024

Inside *A Fine Line* with Curator Joanna Bird at Pitzhanger on 18 May 2024

## Pitzhanger Manor & Gallery

Address: Ealing Green, London W5 5EQ

8-minute walk from Ealing Broadway Station (Elizabeth, Central, District Lines & National Rail)

### Opening hours:

Wednesday to Sunday 10am–5pm, including Bank Holidays (First Thursday of the Month: 10am–8pm)

### General Admission:

£9.00 Standard / £4.50 Students / FREE Under 16

FREE for Members

FREE for Ealing Borough residents every first Thursday of the month 5–8pm, and every Sunday 10am–12.30pm

## Notes to editors

## About Pitzhanger Manor & Gallery

Pitzhanger Manor & Gallery's mission is to promote Sir John Soane's legacy, inspiring visitors with art, architecture and design and nurturing creativity for all within an extensive outreach and events programme. It celebrates Sir John Soane's genius and influence as a designer, juxtaposing his architecture with a programme of ambitious contemporary art exhibitions. Pitzhanger reopened in spring 2019 following a major £12-million conservation and restoration project to return the Manor to his original design, with support from HLF, ACE, Ealing Council and other generous donors.

## About Sir John Soane

Sir John Soane (1753–1837) is one of Britain's most visionary architects, celebrated for his idiosyncratic take on the neoclassical style and mastery of natural light. Soane bought Pitzhanger in 1800. He demolished most of the existing manor house apart from the Dance Wing and from 1800–1804, designed and built a new house as his country estate sitting in 28 acres of parkland. The legacy

**Pitzhanger Manor & Gallery Trust, Mattock Lane, Ealing Green, London W5 5EQ**

[pitzhanger.org.uk](http://pitzhanger.org.uk)

[pitzhanger@pitzhanger.org.uk](mailto:pitzhanger@pitzhanger.org.uk)

020 3985 8888

Charity Registration: 1152434

Company Registration: 08278049



# PITZHANGER

MANOR & GALLERY

of Soane's distinctive buildings, teachings and collections has influenced generations of artists, architects and designers.

## Image Sheet

Please make use of the images in [the Press Kit](#).



Hanne Heuch, *Another Blue*, 2023

Glazed porcelain



Matthew Warner, *Vase Forms*

**Pitzhanger Manor & Gallery Trust, Mattock Lane, Ealing Green, London W5 5EQ**

pitzhanger.org.uk

pitzhanger@pitzhanger.org.uk

020 3985 8888

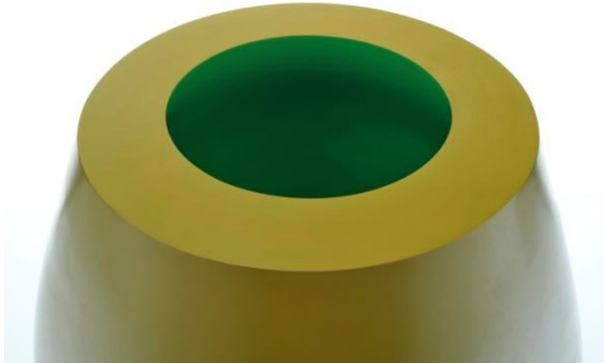
Charity Registration: 1152434

Company Registration: 08278049



# PITZHANGER

MANOR & GALLERY



Nicholas Rena, *Green Remembrance*  
Repository, painted and waxed ceramic  
Photo: Sylvain Deleu



Prue Cooper, *The Co-op, Charles Causley*

Pitzhanger Manor & Gallery Trust, Mattock Lane, Ealing Green, London W5 5EQ

[pitzhanger.org.uk](http://pitzhanger.org.uk)

[pitzhanger@pitzhanger.org.uk](mailto:pitzhanger@pitzhanger.org.uk)

020 3985 8888

Charity Registration: 1152434

Company Registration: 08278049



# PITZHANGER

MANOR & GALLERY



Tom Perkins, *Omega, Variation on the letter 'O'*

Portland Stone



Gregory Warren Wilson, *The Chameleon's Dreaming*

Hand-cut Venetian mosaic glass, bespoke frame

**Pitzhanger Manor & Gallery Trust, Mattock Lane, Ealing Green, London W5 5EQ**

[pitzhanger.org.uk](http://pitzhanger.org.uk)

[pitzhanger@pitzhanger.org.uk](mailto:pitzhanger@pitzhanger.org.uk)

020 3985 8888

Charity Registration: 1152434

Company Registration: 08278049

