

PITZHANGER

MANOR & GALLERY

Press Release

For Immediate Release: 11 November 2024



Grayson Perry, *The Annunciation of the Virgin Deal*, 2012. Arts Council Collection, Southbank Centre, London © Stephen Chung. Gift of the artist and Victoria Miro Gallery with the support of Channel 4 Television, the Art Fund and Sfumato Foundation with additional support from AlixPartners. Photo by Stephen Chung.

Last Chance to see Grayson Perry's The Vanity of Small Differences

Exhibition ends 8 December 2024

An Arts Council Collection Touring Exhibition

Ealing, London: Pitzhanger Manor & Gallery announces the final opportunity to experience the acclaimed exhibition of Grayson Perry's tapestries, *The Vanity of Small Differences*, before they are sent on an international tour. The exhibition, which opened to plaudits on 10 July, will close on 8 December 2024. After this, the tapestries, owned jointly by the Arts Council Collection and the British Council Collection, will be taken into conservation as they prepare for their next tour abroad. This makes this the last chance to see these iconic works in the UK for a long while.

Pitzhanger Manor's historic setting has proved a perfect match for Perry's exploration of class, taste, and social mobility. The tapestries are Perry's contemporary re-reading of William Hogarth's *A Rake's Progress*, which also hangs at Pitzhanger. Perry's tapestries have resonated deeply with the gallery's visitors, with *Country Life* describing it as "a match made in heaven". The exhibition has garnered other great reviews from across the press, with *The Times* calling it "stitches in time" and *The Evening Standard* describing it as "a wonder to view".

PITZHANGER

MANOR & GALLERY

Grayson Perry's six monumental tapestries, inspired by his travels for the BAFTA award-winning series *All in the Best Possible Taste*, reflect his acute observations on class and taste, weaving together a witty and poignant narrative of British society. Visitors to Pitzhanger have been invited to engage closely with the intricate details and allegorical themes of the tapestries. Also displayed at Pitzhanger are engravings of William Hogarth's *A Rake's Progress*, which inspired Perry's tapestries still exhibited in their original setting at Pitzhanger.

Clare Gough, Director of Pitzhanger Manor & Gallery, said: "Exhibiting the work of not one but three Royal Academicians together has been a fun moment for Pitzhanger Manor & Gallery. Artistic virtuosity propelled Sir Grayson Perry, William Hogarth, and Sir John Soane through the social ranks, with two of them knighted. Their work and lives have much to say about art, taste, and society. Come and join the conversation before the exhibition leaves the UK."

The Vanity of Small Differences is jointly owned by the Arts Council Collection and the British Council Collection, gift of the artist and Victoria Miro Gallery, with the support of Channel 4 Television, the Art Fund and Sfumato Foundation with additional support from Alix Partners.

Operating as a 'museum without walls', the Arts Council Collection is the largest national loan collection of modern and contemporary British art in the world and includes important examples by all the UK's most prominent artists. *The Vanity of Small Differences* will now be carefully conserved while temporarily being held in storage before it sets off on an international tour to act as a cultural ambassador for the UK. It will continue to engage people from all round the world with its witty commentary on our social tribes and mores.

Visitors to Pitzhanger Manor & Gallery can also enjoy two other exhibitions: Antoni Malinowski and *Hélène Binet Pigments and Photons* and *Language of the Physical: Katherine Gili's Sculpture*.

pitzhanger.org.uk/grayson-perry

****END****

For all media enquiries, please contact aston.law@pitzhanger.org.uk
lily.mountford@pitzhanger.org.uk, lucinda.macpherson@gmail.com and press@pitzhanger.org.uk

To be kept up to date with the latest news, sign-up to the Pitzhanger newsletter at pitzhanger.org.uk/newsletter

[Instagram](#) | [Facebook](#) | [X](#): @pitzhanger

Listing Information

Grayson Perry: *The Vanity of Small Differences*

Date: 10 July – 8 December 2024



Pitzhanger Manor & Gallery Trust
Mattock Lane, Ealing Green, London W5 5EQ
www.pitzhanger.org.uk pitzhanger@pitzhanger.org.uk 020 3985 8888
Charity Registration: 1152434 Company Registration: 08278049



PITZHANGER

MANOR & GALLERY

Artist

Grayson Perry

Pitzhanger Manor & Gallery

Address: Ealing Green, London W5 5EQ

8-minute walk from Ealing Broadway Station (Elizabeth, Central, District Lines & National Rail)

Opening hours:

Wednesday to Sunday 10am–5pm, including Bank Holidays (First Thursday of the Month: 10am–8pm)

General Admission:

£12 Standard / £6 Students / FREE Under 16

FREE for Members

Pay-what-you-can for Ealing Borough residents every first Thursday of the month 5–8pm, and every Sunday 10am–noon

PITZHANGER

MANOR & GALLERY

Notes to editors

About Grayson Perry

Sir Grayson Perry CBE RA Hon FRIBA is an award-winning British artist and social commentator known for his diverse body of work spanning ceramics, tapestry, sculpture, print and film making. Perry's art is held in prestigious collections including Tate, V&A and Stedelijk Museum Amsterdam. Intricate ceramics and vivid tapestries explore contemporary social issues with originality and wit delving into themes of identity, gender, and societal norms, blurring the lines between craft and fine art to widespread acclaim. Awards include the Turner Prize, Royal Television Society Award and Erasmus Prize.

About Pitzhanger Manor & Gallery

Pitzhanger Manor & Gallery's mission is to promote Sir John Soane's legacy, inspiring visitors with art, architecture and design and nurturing creativity for all within an extensive outreach and events programme. It celebrates Sir John Soane's genius and influence as a designer, juxtaposing his architecture with a programme of ambitious contemporary art exhibitions. Pitzhanger reopened in spring 2019 following a major £12-million conservation and restoration project to return the Manor to his original design, with support from HLF, ACE, Ealing Council, and other generous donors.

About Sir John Soane

Sir John Soane (1753–1837) is one of Britain's most visionary architects, celebrated for his idiosyncratic take on the neoclassical style and mastery of natural light. Soane bought Pitzhanger in 1800. He demolished most of the existing manor house apart from the Dance Wing and from 1800–1804, designed and built a new house as his country estate sitting in 28 acres of parkland. The legacy of Soane's distinctive buildings, teachings and collections has influenced generations of artists, architects, and designers.

About the Arts Council Collection

The Arts Council Collection is a national loan collection of British art from 1946 to the present day. With over 8,000 works and more than 1,000 loans made to over 100 venues a year, it is seen by millions of people in public spaces from galleries and museums to hospitals, libraries, and universities. Representing one of the most important collections of British modern and contemporary art in the world, it includes work from Barbara Hepworth, Tracey Emin and Henry Moore to Mona Hatoum, Anish Kapoor and Hurvin Anderson.



Pitzhanger Manor & Gallery Trust
Mattock Lane, Ealing Green, London W5 5EQ
www.pitzhanger.org.uk pitzhanger@pitzhanger.org.uk 020 3985 8888
Charity Registration: 1152434 Company Registration: 08278049



PITZHANGER

MANOR & GALLERY

The Collection supports and promotes British artists by acquiring art at an early stage of their careers. The Arts Council Collection is managed by Southbank Centre on behalf of Arts Council England. Visit artscouncilcollection.org.uk for more information.

Image Sheet

Please download high resolution images from [the Press Kit](#).



Grayson Perry, *The Adoration of the Cage Fighters*, 2012. Arts Council Collection, Southbank Centre, London © Stephen Chung. Gift of the artist and Victoria Miro Gallery with the support of Channel 4 Television, the Art Fund and Sfumato Foundation with additional support from AlixPartners



Grayson Perry, *The Agony in the Car Park*, 2012. Arts Council Collection, Southbank Centre, London © Stephen Chung. Gift of the artist and Victoria Miro Gallery with the support of Channel 4 Television, the Art Fund and Sfumato Foundation with additional support from AlixPartners



Grayson Perry, *Expulsion from Number 8 Eden Close*, 2012. Arts Council Collection, Southbank Centre, London © Stephen Chung. Gift of the artist and Victoria Miro Gallery with the support of Channel 4 Television, the Art Fund and Sfumato Foundation with additional support from AlixPartners. Photo by Stephen Chung.

PITZHANGER

MANOR & GALLERY



Grayson Perry, *The Annunciation of the Virgin Deal*, 2012. Arts Council Collection, Southbank Centre, London © Stephen Chung. Gift of the artist and Victoria Miro Gallery with the support of Channel 4 Television, the Art Fund and Sfumato Foundation with additional support from AlixPartners. Photo by Stephen Chung.



Grayson Perry, *The Upper Class at Bay*, 2012. Arts Council Collection, Southbank Centre, London © Stephen Chung. Gift of the artist and Victoria Miro Gallery with the support of Channel 4 Television, the Art Fund and Sfumato Foundation with additional support from AlixPartners. Photo by Stephen Chung.



Grayson Perry, *#Lamentation*, 2012. Arts Council Collection, Southbank Centre, London © Stephen Chung. Gift of the artist and Victoria Miro Gallery with the support of Channel 4 Television, the Art Fund and Sfumato Foundation with additional support from AlixPartners. Photo by Stephen Chung.



Front façade of Pitzhanger Manor. © Pitzhanger Manor & Gallery. Photo by Andy Stagg

PITZHANGER

MANOR & GALLERY



The Small Drawing Room of Pitzhanger Manor, where William Hogarth's *A Rake's Progress* were purchased for in 1802 and where a set of the 18th century engravings of the series is currently displayed. © Stephen Chung. Photo by Stephen Chung.



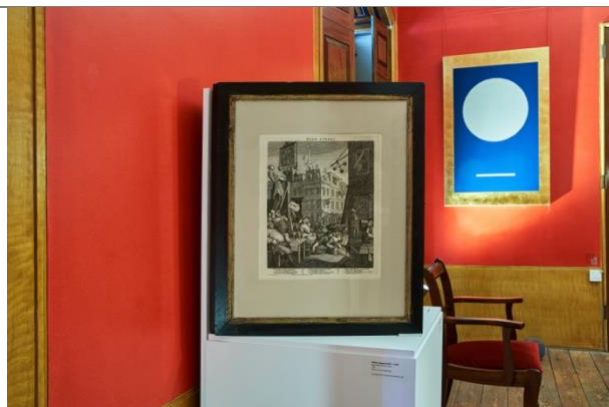
The 18th century engravings of William Hogarth's *A Rake's Progress* in the Small Drawing Room of Pitzhanger Manor. © Irina Limar. Photo by Irina Limar



The 18th century engravings of William Hogarth's *Gin Lane* in the Small Drawing Room of Pitzhanger Manor. © Stephen Chung. Photo by Stephen Chung.

PITZHANGER

MANOR & GALLERY



The 18th century engravings of William Hogarth's *Beer Street* in the Small Drawing Room of Pitzhanger Manor. © Irina Limar. Photo by Irina Limar.



Collection



Supported using public funding by
**ARTS COUNCIL
ENGLAND**

AlixPartners
When it really matters.



Art Fund_



Pitzhanger Manor & Gallery Trust
Mattock Lane, Ealing Green, London W5 5EQ
www.pitzhanger.org.uk pitzhanger@pitzhanger.org.uk 020 3985 8888
Charity Registration: 1152434 Company Registration: 08278049

